



## 3 Person 4 Person Camper Trailer Off-Road Trailer Hardtop RV For Going Out To Play Large Space

Our Product Introduction

for more products please visit us on huazhiyurv.com

### Basic Information

- Place of Origin: China
- Brand Name: HuaZhiyu
- Model Number: HQ22
- Minimum Order Quantity: One
- Delivery Time: negotiate
- Payment Terms: T/T

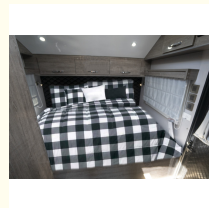
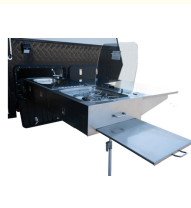


### Product Specification

- Electricity: Battery, Powerful Power System, Solar Panels, Indoor Lighting, Outdoor Lighting, Sockets, Mains, Control Panel
- Exterior Configuration: Awnings, Ceilings, Tool Boxes, Bar Counters, Kitchens, Showers
- Pipeline: Bathroom, Basin, Toilet
- Interior Configuration: Bathroom, Lounge, Kitchen, Bed, Flooring, Cabinets, Faux Leather, Car Doors
- Appliances/Accessories: Refrigerator, Stove, Gas, Microwave, Heater, Air Conditioning, Safety Equipment, Entertainment System Antenna
- Material: Aluminum-plastic Panel + Aluminum-sprawl Panel
- Water Tank: Drinking Water Tank, Gray Water Tank, Clean Water Tank, Black Water Tank



### More Images



### Product Description

Large space off-road excellent off-road trailer hardtop RV for going out to play

#### Product Description:

The Hardtop caravan series offers a high-quality outdoor experience for those who love to travel without compromising the comforts of home. Designed with robustness in mind, it can handle most road conditions, ensuring a smooth journey to your destination. Each caravan comes fully equipped with a range of features that blend functionality with luxury, making it an ideal choice for adventurers who appreciate the finer things while exploring the great outdoors.

At the heart of the caravan's interior amenities lies the fully integrated pipeline system, comprising a spacious bathroom with a contemporary basin and a high-quality toilet. This private space allows you to freshen up in comfort, providing the convenience of modern-day sanitation facilities while you're parked in the wilderness or stationed at a campsite.

Understanding the need for self-sufficiency in remote areas, the Hardtop caravan is fitted with a comprehensive electricity setup. It includes a durable battery backed by a powerful power system that ensures uninterrupted energy supply. Solar panels mounted on the caravan harvest sunlight to provide eco-friendly power, contributing to the caravan's self-sustaining capabilities. Indoor and outdoor lighting systems are thoughtfully integrated to illuminate your evenings, with ample sockets available to power your gadgets. The caravan also features mains connectivity for times when you are camping at powered sites, and a user-friendly control panel makes managing your caravan's electrical systems a breeze.

The exterior configuration of the caravan is just as impressive, with awnings that extend to provide additional shaded space — perfect for relaxing outside. The ceilings are constructed with high-grade materials to offer both insulation and protection from the elements. For those who love to cook and entertain, the caravan boasts external tool boxes, bar counters, and kitchens equipped for preparing delicious meals. Additionally, an external shower system provides an invigorating experience under the open sky, ensuring you can stay refreshed in any location.

Our Product Introduction

Water storage is a critical aspect of any caravan, and the Hardtop series excels with its comprehensive water tank system. This includes a drinking water tank for safe and clean hydration, a grey water tank for recycling sink and shower water, a clean water tank for general usage, and a black water tank designed to securely store sewage. These tanks ensure that you have access to water for all your needs, no matter how far off the beaten track you venture.

No modern caravan would be complete without a suite of appliances and accessories, and the Hardtop caravan doesn't disappoint. It is equipped with a refrigerator to keep your food and drinks chilled, a stove and gas supply for cooking, a microwave for quick meals, and a heater to keep the interior cozy on cooler nights. Air conditioning is also installed to maintain a comfortable temperature during warmer weather. Safety equipment is strategically placed throughout the caravan, and an entertainment system with an antenna ensures you stay connected and entertained wherever your travels may take you.

In conclusion, the Hardtop caravan series is designed to deliver a high-quality outdoor experience, providing the freedom to explore without sacrificing the luxury and convenience of modern living. Built to withstand various road conditions, it offers a perfect blend of durability, comfort, and self-sufficiency, making it the ideal companion for your next adventure.

Features:

- Product Name: Hardtop caravans
- Appliances/Accessories:
  - Refrigerator
  - Stove
  - Gas
  - Microwave
  - Heater
  - Air Conditioning
  - Safety Equipment
  - Entertainment System
  - Antenna
- Interior configuration:
  - Bathroom
  - Lounge
  - Kitchen
  - Bed
  - Flooring
  - Cabinets
  - Faux Leather
  - Car Doors
- Exterior configuration:
  - Awnings
  - Ceilings
  - Tool Boxes
  - Bar Counters
  - Kitchens
  - Showers
- Electricity:
  - Battery
  - Powerful Power System
  - Solar Panels
  - Indoor Lighting
  - Outdoor Lighting
  - Sockets
  - Mains
  - Control Panel
- Pipeline:
  - Bathroom
  - Basin
  - Toilet
- Accommodates multiple families
- Good looking look
- The most powerful independent suspension system

Technical Parameters:

Category	Specification
Appliances/Accessories	Refrigerator, Stove, Gas, Microwave, Heater, Air Conditioning, Safety Equipment, Entertainment System, Antenna
Interior Configuration	Bathroom, Lounge, Kitchen, Bed, Flooring, Cabinets, Faux Leather, Car Doors
Pipeline	Bathroom, Basin, Toilet
Exterior Configuration	Awnings, Ceilings, Tool Boxes, Bar Counters, Kitchens, Showers
Material	Aluminum-plastic Panel + Aluminum-sprawl Panel
Electricity	Battery, Powerful Power System, Solar Panels, Indoor Lighting, Outdoor Lighting, Sockets, Mains, Control Panel
Water Tank	Drinking Water Tank, Gray Water Tank, Clean Water Tank, Black Water Tank

Applications:

The HuaZhiyu HQ15 hardtop caravan, originating from China, is a versatile and luxurious travel companion that is perfect for a variety of occasions and scenarios. With a minimum order quantity of just one and straightforward payment terms via T/T, the HQ15 is an accessible option for anyone looking to embark on road adventures without leaving behind the comforts of home.

Designed to accommodate multiple families, the HQ15 is ideal for extended family vacations, group camping trips, and cross-country tours. The caravan's robust construction features an aluminum-plastic panel and aluminum-sprawl panel, ensuring that it is safer and more durable against the elements and the rigors of travel. Whether journeying through mountain passes or coastal highways, travelers can trust in the structural integrity of the HQ15.

The HQ15's interior configuration includes a bathroom equipped with a basin and toilet, a cozy lounge area, a fully-functional kitchen, a comfortable bed, and quality flooring. Storage needs are taken care of with ample cabinets, and the faux leather finishing adds a touch of luxury to the caravan's aesthetic. The inclusion of car doors enhances both accessibility and security, making the HQ15 a convenient and safe choice for families and groups.

For those who value self-sufficiency in their travels, the HQ15 comes equipped with a powerful power system, including a battery, solar panels, comprehensive indoor and outdoor lighting, various sockets, mains connectivity, and a control panel to manage all electrical needs. This ensures that all the comforts of home are available no matter where the journey takes you, from remote wilderness locations to bustling campsites.

Water is a critical resource while on the road, and the HQ15 has it covered with a drinking water tank, gray water tank, clean water tank, and black water tank. This comprehensive water system ensures that clean water is always available for drinking and cooking, while waste water is responsibly managed and stored.

Whether it's a weekend retreat, a summer holiday, or an extended exploration, the HuaZhiyu HQ15 hardtop caravan provides a home away from home that is both comfortable and reliable. It is a preferred choice for those who wish to travel with peace of mind, knowing that they have a safe, durable, and well-equipped living space that accommodates the needs of multiple families and offers all the comforts of home on the go.

### Customization:

**Brand Name:** HuaZhiyu

**Model Number:** HQ15

**Place of Origin:** China

**Minimum Order Quantity:** One

**Payment Terms:** T/T

**Electricity:** Battery, Powerful Power System, Solar Panels, Indoor Lighting, Outdoor Lighting, Sockets, Mains, Control Panel

**Material:** Aluminum-plastic Panel + Aluminum-sprawl Panel

**Exterior Configuration:** Awnings, Ceilings, Tool Boxes, Bar Counters, Kitchens, Showers

**Pipeline:** Bathroom, Basin, Toilet

**Interior Configuration:** Bathroom, Lounge, Kitchen, Bed, Flooring, Cabinets, Faux Leather, Car Doors

This compact design is perfect for weekend campers who want to embark on an adventure, offering all the comforts of home with its abundant configurations. The HuaZhiyu HQ15 Hardtop Caravan is meticulously crafted in China and is available for order with a minimum quantity of just one. The caravan is equipped with a battery, a powerful power system including solar panels, and offers both indoor and outdoor lighting solutions along with various sockets, a mains connection, and a user-friendly control panel. It is constructed using a durable combination of aluminum-plastic and aluminum-sprawl panels. For the exterior, it comes with a range of features such as awnings, a ceiling, tool boxes, bar counters, kitchens, and showers to elevate your outdoor experience. The sophisticated pipeline system includes a bathroom, basin, and toilet. The interior is just as impressive with a bathroom, lounge, kitchen, bed, flooring, cabinets, and faux leather finishing, all designed to provide the ultimate in comfort and style during your travels.

### Packing and Shipping:

Our Hardtop Caravans are meticulously packaged to ensure they arrive in pristine condition. Each caravan is securely anchored to a custom-built shipping frame that prevents movement during transit. The exterior is wrapped with a protective layer of heavy-duty shrink wrap, while the interior is cushioned with high-density foam blocks to safeguard against vibrations and impacts.

Prior to shipping, each caravan undergoes a thorough pre-delivery inspection to confirm that all features and components are in perfect working order. Once cleared, the caravan is sealed and its identification details are logged for tracking purposes.

We work closely with reputable shipping partners to provide a seamless delivery experience. The caravan will be transported on a specialized flatbed truck, designed to handle oversized loads with the utmost care. Upon arrival, our delivery team will assist with the unloading process and provide guidance on caravan setup and maintenance.

Please note that shipping times may vary depending on the final destination and external factors beyond our control. We will provide you with an estimated delivery date and keep you informed of any updates throughout the shipping process. Our priority is to deliver your Hardtop Caravan safely and efficiently, so you can embark on your travels with peace of mind.

### FAQ:

**Q1: What is the brand and model number of the caravan?**

A1: The caravan is manufactured by HuaZhiyu, and the model number is HQ15.

**Q2: Where is the HuaZhiyu HQ15 caravan made?**

A2: The HuaZhiyu HQ15 is manufactured in China.

**Q3: What is the minimum order quantity for the HuaZhiyu HQ15 caravan?**

A3: The minimum order quantity for the HuaZhiyu HQ15 caravan is one unit.

**Q4: What are the payment terms for purchasing a HuaZhiyu HQ15 caravan?**

A4: The payment terms for purchasing the HuaZhiyu HQ15 caravan are via Telegraphic Transfer (T/T).

**Q5: Can the HuaZhiyu HQ15 caravan be customized according to specific requirements?**

A5: For information on customization options, please contact the manufacturer or sales representative directly to discuss your specific needs and the possibilities for customization.



**Sichuan Huazhiyu Technology Co., Ltd**



yuguanhua86@gmail.com



huazhiyurv.com

Taiping Road, Tianfu New District, Chengdu, Sichuan, China